

## ■ Program-----

### ○ Plenary Session & Welcome Party

**July 31**

#### ◆ Registration

**21st Century Plaza I, Multipurpose Hall  
(14:00-17:00)**

##### Timetable

14:00 Start registration desk at 21st Century Plaza I, Multipurpose Hall

#### ◆ Plenary Session (Keynote speech)

**Faculty of Engineering Main Building,  
Main Lecture Room  
(17:30-19:00)**

##### Timetable

17:30 Welcome speech from the Chairperson of the organizing committee  
Prof. TAKAGI Akihiko (Kyushu University)

17:35 Introduction of Prof. TSUTSUMI Kenji

17:40 Keynote speech  
Prof. TSUTSUMI Kenji (Osaka University)

18:40 Program ends

#### ◆ Welcome Party

**Central Cafeteria  
(19:00-21:00)**

##### Timetable

19:05 Speech from the President of the Association of Japanese Geographers  
Prof. YAGASAKI Noritaka (Nihon University)

19:10 Guest speeches  
Prof. SON Ill (Pusan National University)  
Prof. YU Lizhong (Shanghai New York University)

19:20 Speech of welcome & Toast  
Prof. TAKAYAMA Michiaki (Dean of the Faculty of Humanities, Kyushu University)

21:00 Program ends

## ○ Oral Presentation

### August 1

### 21st Century Plaza I, Lecture Room A

#### Session: Cultural Policy and Food Culture

Time	Presenter: Title	pp
9:00-9:20	ARAKI Hitoshi, CHANDEL Rajendra Singh: Food Quality and the Economical and Cultural Background: From the Questionnaire Survey of Indian and Japanese Students	79
9:20-9:40	KANIE Megumi: Black Tea: From Estate to Teacup, or to Plastic Bottle? - Implications from Food System and Food Regime Perspectives -	107
9:40-10:00	IKEDA Kazuko: National Homogenization of Culinary Culture and Commodity in Japan: A Case Study of <i>Katuobushi</i> as an Essential Food of <i>Washoku</i>	5
10:00-10:20	NAHM Keebom: The Publicness of Public Art - Focused on the "Golden Market, Golden Age" Public Art Project -	127
10:20-10:40	JEON Eunhwee: Mapping Popular Music of Others: the Gentrification of the Hong-dae Area in Seoul, Korea	100
10:40-11:00	YAMADA Harumichi: Dream and Reality of the Koza Music Town, Okinawa, Okinawa, Japan.	164
11:00-11:20	WANG Xiangdong: The Thinking of Geography Education in Northeast China	159

11:20-13:00 *Lunch Time*

#### Session: Food, Agriculture and Rural Space

13:00-13:20	CHEN Lin: Transformation of Employment Structure in Inland Rural Areas of Fujian Province, China: With a Focus on the Development of Vegetable Production	81
13:20-13:40	LIU Yansui, LIANG Haoguang, GUO Liying: Rural Hollowing and Land Consolidation under Rapid Urbanization in China	123
13:40-14:00	SHIRAISHI Natsuko: Putting What the First? Natural Resources or Subsistence of the People: Survival Strategy and Resources Using of Alangan-Mangyan in Mindoro, Philippine	48
14:00-14:20	<i>Coffee Break</i>	
14:20-14:40	LEE Kyung Jin, RHEW Hosahng: Stakeholder Network Analysis for Governing the Commons: A Preliminary Result for the Yeongsan River Estuary	118
14:40-15:00	UENO Risa: A Review of the Role of Administrative Region: Focus on Mishima Village - A Small Municipality in Kagoshima Prefecture	57
15:00-15:20	IMAIZUMI Aki: Diversification of Seed Supply Systems: A Case Study of Organic Seed in Japan	98
15:20-15:40	KAMMURA Hiroaki: The Function of Prefecture's Antenna Shops in Tokyo's Wards	106
15:40-16:00	OISHI Takayuki: Changing Tea Distribution in Kagoshima Prefecture	134
16:00-16:20	TANNO Yasuhiko: Spatial Characteristics of Pork Branding Strategy in Japan	152

## August 1

### 21st Century Plaza I, Lecture Room B

#### Session: Tourism

9:00-9:20	GU Lei: On the Spatial and Temporal Features of Eco-tourist Flow in China: A Case Study of Bird-watching Tourism	90
9:20-9:40	LI Shan, LIU Huating, Qiu Rongxu: An Agent-Based Simulation Approach to Analyze the Spatial Pattern of Tourism Circle in China	120
9:40-10:00	LI Shan, TAN Lei, SUN Meishu: The Regional Difference of Tourism Climate Comfort Periods in Chinese Mainland during the Nearly 60 Years	121
10:00-10:20	LI Gang: Destination Island Effects: A Framework for Reconstruction and Assessment of Tourism Environmental Effects	13
10:20-10:40	MIHARA Atsumi: Promotion of Medical Tourism and Patient Mobility in Busan City, South Korea	125

#### Session: Nature and Climatology

10:40-11:00	PARK Sunyurp, KOO Donghoe: Satellite-Measured Vegetation Phenology and its Relations to Atmospheric Aerosols in the Korean Peninsula	137
11:00-11:20	-----	

11:20-13:00 *Lunch Time*

#### Session: GIS

13:00-13:20	GAO Xiaolu, YUAN Haihong, QI Wei, LIU Shenghe: Assessing the Social and Economic Vulnerability of Urban Areas to Disasters: A Case Study in Beijing, China	88
13:20-13:40	HONG Seong-Yun: Delineating Neighbourhoods: The Use of Voronoi Tessellation	93
13:40-14:00	HU Liang, SHI Feng: The Categorisation of Urban Settlements in YunGui Plateau based on GIS - An Approach towards Low-slope Hilly Region Development	94

14:00-14:20 *Coffee Break*

#### Session: Earthquake Disaster

14:20-14:40	FUJIMOTO Noritsugu, PIAO Meishan, YAN Chengnan, XU Shunji: Industrial Structure and Decontamination-intensive Reconstruction Policy in Fukushima Prefecture After 3.11	87
14:40-15:00	YAN Chengnan, FUJIMOTO Noritsugu, PIAO Meishan, XU Shunji: Encouraging the Development of Nuclear Power Plants as an Economic Promotion Policy in Peripheral Areas in Japan	168
15:00-15:20	TADA Tadayoshi: Progress and Obstacles to Housing Reconstruction in Disaster-hit Areas of Northeast Japan	146
15:20-15:40	NOZU Kazuo: The Impact of Disaster by the Great East Japan Earthquake to the Tourism Industry in Fukushima Prefecture	132
15:40-16:00	KASHIMA Kaoru: The Application of the Diatom Analysis for the Prediction of Coastal Natural Hazards and Tsunami Disasters in Japan	109

## August 1

### Faculty of Engineering Main Building,

### Lecture Room 4

#### Session: Industry, Traffic and Development

9:00-9:20	LI Nana: Spatial Filtering and Location Patterns of Enterprise R&D in Kanto Region: Case Study of Electric and Electronic Equipment Industry	19
9:20-9:40	ABE Yasuhisa, SUN Yan: The Employment Situation for Chinese Foreign Students in Local Cities and their Will to Continue Working -A Case Study of Fukuoka Prefecture-	78
9:40-10:00	YANG Yongchun: Characteristics and Risks of China's Gradual Reform Model	170
10:00-10:20	ZHENG Guo, ZHANG Lei: Boom or Bubble? An Evaluation on the Economic Effect of China's Economic and Technological Development Zones	177
10:20-10:40	PIAO Meishan, XU Shunji, FUJIMOTO Noritsugu, YAN Chengnan: A Study of Industrial Location and Clusters in Border Areas in Northeast China: The Case of Yanbian Korean Autonomous Prefecture	38
10:40-11:00	WANG Qiang, FAN Jie: The Causes of China's Economic Agglomeration towards the Coastal Regions	157
11:00-11:20	FANG Chuanglin, FANG Jiawen, YANG Yumei: New Structure and New Trend of Formation and Development of Urban Agglomerations in China	84

11:20-13:00 *Lunch Time*

#### Session: Urban Space

13:00-13:20	HONG Hui: Research on Urban Sprawl in Beijing: A Perspective on Residential Space	92
13:20-13:40	TAO Shasha: Family Register Identity and Migration in Shanghai	53
13:40-14:00	DAI Dandan: The Driving Force and New Problems of Urbanization in the Pearl River Delta	82
14:00-14:20	<i>Coffee Break</i>	
14:20-14:40	SAWAOKA Tomohiro: Rebuilding Projects of Condominium Complexes in the Suburbs of Tokyo Metropolitan Area	143
14:40-15:00	WANG Xingping, HU Liang, ZHU Qiushi: A Family-Based Study on Jobs-Housing-Public Services Coupling of Chinese Urbanization - Base on Two Typical Case of Small Town	162
15:00-15:20	CHAI Yanwei: Space-time Behavior Analysis and its Application in Smart Travel Planning based on GPS Data	80
15:20-15:40	ZHANG Yan, CHAI Yanwei: A Study on Suburbanization of Activity Space: Case Study of Beijing	175
15:40-16:00	HUANG Xing: Responses of Emerging Large Scope Gentrification in Guiyang, China	95
16:00-16:20	WUZHATI Yeerken, LIU Hui: Process and the Driving Factors of Central Asia's Urbanization: A Case Study in Kazakhstan	66

## August 2

### 21st Century Plaza I, Lecture Room A

#### Session: Environmental Study and Policy

9:00-9:20	WEI Wei: Environmental Suitability Evaluation for Human Settlements in Arid Inland River Basin: A Case Study on the Shiyang River Basin in Northwest China	61
9:20-9:40	ZHANG Kai, RAN Shenghong, LI Lijuan: Influence of Human Activities on Water Resources in Arid Regions: A Case Study for Shihezi	173
9:40-10:00	YIN Guanwen: Introspective and Extrospective Politics in Urban Policy-making Process: A Case Study of Ecotown Plan, Kitakyushu City	72
10:00-10:20	JEONG Yonjoo: An Analysis of the Spatialities of Renewable Energy Projects in South Korea and Japan	102
10:20-10:40	ISHII Hideki, KOYAMA Ryota, KOMATSU Tomomi, HAYASHI Kumpei: Integrated Policies for Radioactivity from Production to Inspection: A Case Study of Rice Plant Cultivation Experiments and Mapping Radioactive Substances	99
10:40-11:00	PARK Sookyung: A Geographical Study on Cyberpolitics in Virtual Geography and Relevance between Cyberspace and Physical Space: South Korea's Presidential Election in 2012	136
11:00-11:20	-----	

11:20-13:00 *Lunch Time*

13:00-14:00 *Group Photo*

## August 2

### 21st Century Plaza I, Lecture Room B

Session: Population

9:00-9:20	KAMIYA Hiroo: Socio-economic Characteristics of Receiving Regions of Vietnamese Bride in Korea	104
9:20-9:40	PHAM Thi Binh: Cross-border Marriage Migration between Vietnam and Korea: Focusing up on Life of Vietnamese Brides in Korea	33
9:40-10:00	LIU Zhilin, WANG Yujun: Housing Access, Sense of Attachment, and Settlement Intention of Rural Migrants in Chinese Cities: Findings from a Twelve-City Migrant Survey	25
10:00-10:20	LIU Yungang, ZHOU Wenting: Migration Politics in Chinese International Cities: A Case Study of Japanese Expatriates in Guangzhou	124
10:20-10:40	SATO Susumu: A Geographical Study on the Current State of the Number of Children in the Tokyo Metropolitan Area: From the Point of View of the Number of Brothers	44
10:40-11:00	WANG Tiantian: Regional Differentiation on Age Structure in Urban Beijing under the Background of Ageing	157
11:00-11:20	REN Hai: A Study of Urban Development in Shanghai	140

11:20-13:00 *Lunch Time*

13:00-14:00 *Group Photo*

**August 2**  
**Faculty of Engineering Main Building,**  
**Lecture Room 4**

Session: Industry, Traffic and Development

9:00-9:20	FENG Lei: Urban Railway Networks and the Formation of High Density Landscape	85
9:20-9:40	YANG Liya: Travel Mode Choice in the Process of Rapid Urbanization in China	169
9:40-10:00	ZHU Qiushi, WANG Xingping: The Analysis of Employment Space Pattern and Influencing Factor: A Case Study of Shanghai-Nanjing High-Speed Rail Transit Corridor Areas	180
10:00-10:20	NAKAMURA Tsutomu: A Comparative Study on Regional Differences in ICT-based Health Care Services	127
10:20-10:40	LEE Jae-cheon, CHOO Sungjae: Embeddedness into the Local as a Strategy for Survival: The Case of Daegu Bank	117
10:40-11:00	WEI Dongying: Development Situation of Geoparks and Discussion on its Development Trend	163
11:00-11:20	-----	

11:20-13:00 *Lunch Time*

13:00-14:00 *Group Photo*

## ○Poster Presentation

**August 2**

**21st Century Plaza I, Multipurpose Hall  
(Core time: 14:00-15:00)**

No	Presenter: Title	pp
P-01	HASHIZUME Kosuke: The Impact on a Region by Opening a Public University - Case Study of Soja City, Japan -	91
P-02	IGARASHI Ryusuke, SUGAI Toshihiko, IMURA Ryusuke: Developing Process of the Erosional Landform and the Developmental Mechanism of Slope Failure in Shirasu Plateau in Japan	96
P-03	ISONO Takumi, SUGIMOTO Koun: Spatial Characteristics of Tourist Attractions Distribution in the Sydney Metropolitan Area: Focusing on the Travel Guidebook Analysis	8
P-04	KAJIHARA Hiroyuki: Recent Development and Issues of Asia-Pacific Geoparks	103
P-05	KAWANAMI Tomoe: The Changes of Tourism in Ogasawara Islands after Being Registered as World Heritage Sites	110
P-06	KOIZUMI Ryo: Changing the Spatial Patterns of Residents in the Tokyo Metropolitan Area since 2000	111
P-07	KOMAKI Nobuhiko: Locational Trends of Drugstores in Aichi Prefecture: A Perspective of the "Super-aged Society"	113
P-08	KOMURO Jo: Development of the Inbound Tourism in Wadano District, Hakuba, Central Japan - An Analysis Focusing on the Promotion of Accommodations -	114
P-09	LE Quy, NGUYEN Ngu, NGUYEN Khoa: Application Geography Information System (GIS) to Determine Flooding Area Caused by Sea Levels Rising in Coastal Area of Viet Nam Case Study in Quang Ngan Commune, Central Viet Nam	115
P-10	LIU Yanjun: Evolution of the Coupling Relationship between Regional Development Strength and Resource Environment Level in China	122
P-11	NIWA Takahito: Recovery from The Great East Japan Earthquake and Current Condition of Labor Market: A Case Study of Minamisoma City, Fukushima	129
P-12	NORITO Takashi: Rural Revitalization through Developing the Local Food System in Setouchi City, Okayama Prefecture, Japan	130
P-13	ODA Takashi, SASAKI Toru, SEKINE Ryohei: Challenges in Post-disaster Safety and Risk Communication: A Survey on Food Consumption Behaviors in Iwaki City, Fukushima Prefecture	133
P-14	SASAKI Toru: Regional Characteristics of Agricultural Production after Economic Reform in Inner Mongolia, China	141
P-15	SHI Peiji: Study on Strategic Countermeasure of the Construction of Eco-environmental and the Sustainable Using of Water Resource in Shiyang River Drainage Basin	144
P-16	TAK Hanmyeong, SON III: Study on Structure of Uvala and Development of Irrigation Facilities in Kwangduk-ri Uvala	147
P-17	TAKAGI Akihiko, TANAKA Keisuke: Some Geographical Aspects on the Japanese General Election in 2012	150
P-18	TAKASAKI Akihiro: Museumizing the City: Museumizing the City: Practice of Public Art Utilizing Regional Resource	151
P-19	TERATOKO Yukio: Changes in Loquat Production in Nagasaki Prefecture from the View Point of Social Relations	154



P-20	TOMINAGA Tetsuo: Functional Changes of the Outside Space in Kamagasaki, the Day Laborer District of Ōsaka	155
P-21	WANG Dai: The Contradictions and Challenges Faced with the Development of Biomass Energy Industry in China	156
P-22	YAMAMOTO Kenta: Social Relationships among Workers and the Spatial Functions of Animation Studios: A Case Study of Studio M	166
P-23	YOSHIDA Kunimitsu: Analysis of Farmers' Networks for the Dynamism of Large-scale Upland Farming in Tokachi Plain	172
P-24	ZHANG Yuqing: Women's Employment and Child Care in Suburban Areas- A Case Study of Dalian, China	176
P-25	ZHOU Chun-shan: The Research of Guangzhou's Housing Spatial Structure and Evolution Mechanism in the Transitional Era	178

## ○ **Short Trip**

**August 1**

### **Tenjin, Hakata and Ito Campus (17:00-19:00)**

This short tour takes participants to Tenjin and Hakata, the central areas in Fukuoka city. We introduce historical sites and sightseeing spots in some courses. Another course takes participants to Ito (a new campus of Kyushu University). These trips provide opportunities for the participants to know more about the venue.

#### Timetable

- 17:00 Depart from Kyushu University (to Tenjin and Hakata by subway; to Ito Campus by bus)
- 18:00 Short Trips around Tenjin and Hakata or Ito Campus.
- 19:00 Program ends

## ○ **Closing Ceremony & Banquet Dinner**

**August 2**

### ◆ **Closing Ceremony**

#### **Central Library, Library Hall (15:30-16:30)**

#### Timetable

- 15:30 Speech from the Chairperson of the organizing committee  
Prof. TAKAGI Akihiko (Kyushu University)
- 15:35 Introduction about next conference  
Prof. LEE Kang-Won (Chonbuk National University)
- 15:45 Young Geographer Prize Ceremony
- 16:05 Information about field tour of Fukuoka  
Mr. TERATOKO Yukio (Kyushu University)

### ◆ **Banquet Dinner**

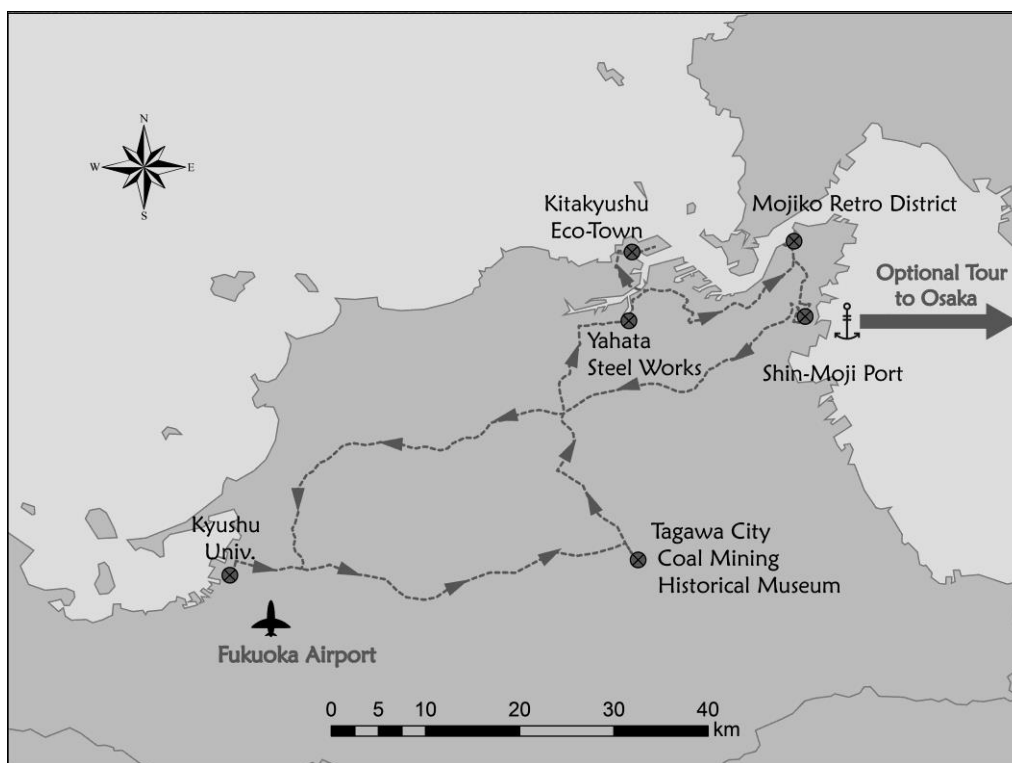
#### **Cafeteria of the Faculty of Engineering (18:00-20:00)**

## ○Field Tour

### August 3

### Fukuoka (9:00-20:00)

This tour provides an opportunity to discover similarity and variety of sustainable development in Asia through understanding industrial modernization and postindustrial society in Fukuoka. We are planning to visit Tagawa city, which used to prosper as coal-mining area, to see landscape changes in coal-field area that has occurred with changes in the industrial structure. And then, we will visit several sites famous for industrial history, environmental movement, and tourism policy, in Kitakyushu.



#### Timetable

9:00	Depart from Kyushu University
10:30	Tagawa City Coal Mining Historical Museum 田川市石炭歴史博物館
13:00	Lunch Time
14:00	Site of Yahata Steelworks 八幡製鉄所跡
15:30	Kitakyushu Eco-town 北九州エコタウン
17:00	Mojiko Retro District 門司港レトロ
18:50	Shin-Moji Port (optional tour participants) → 20:00 Depart to Kobe
20:00	Kyushu University

## ○Optional Tour

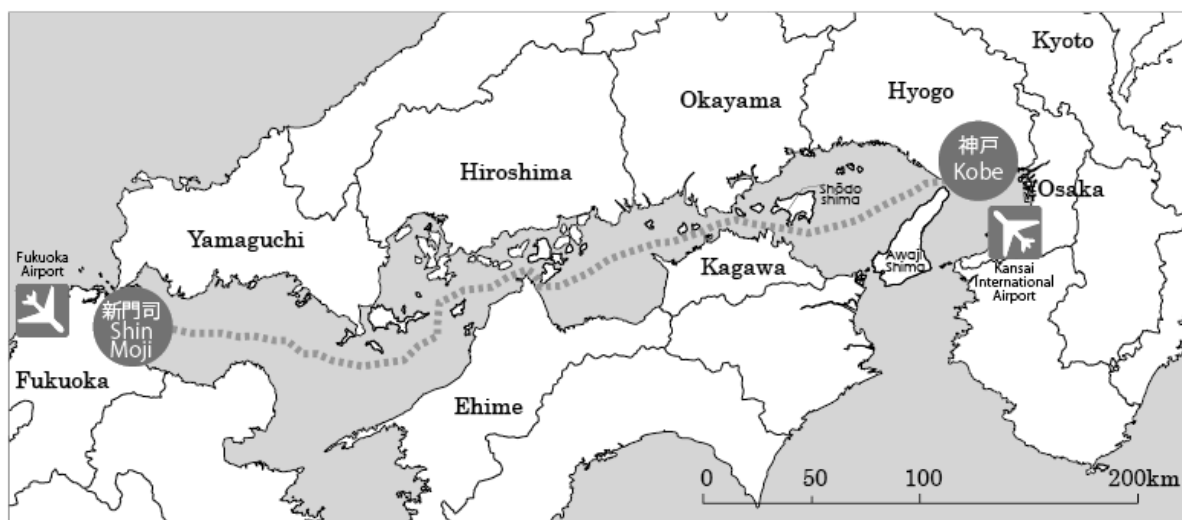
**August 3-4**

### **Osaka to Kyoto (10:00-18:00)**

This tour takes participants from Kyushu to Kobe by night cruise. The field tour will start by exploring the Korean town in Tsuruhashi area. We will move to the Expo '70 Commemorative Park. We visit the Expo'70 Pavilion and the National Museum of Ethnology in the park. We eventually will arrive at Kyoto.

#### August 3

After the field tour in Fukuoka and Kitakyushu, we will take the participants to the port in the evening. Cruise through the Seto Inland Sea to Kobe during the night.

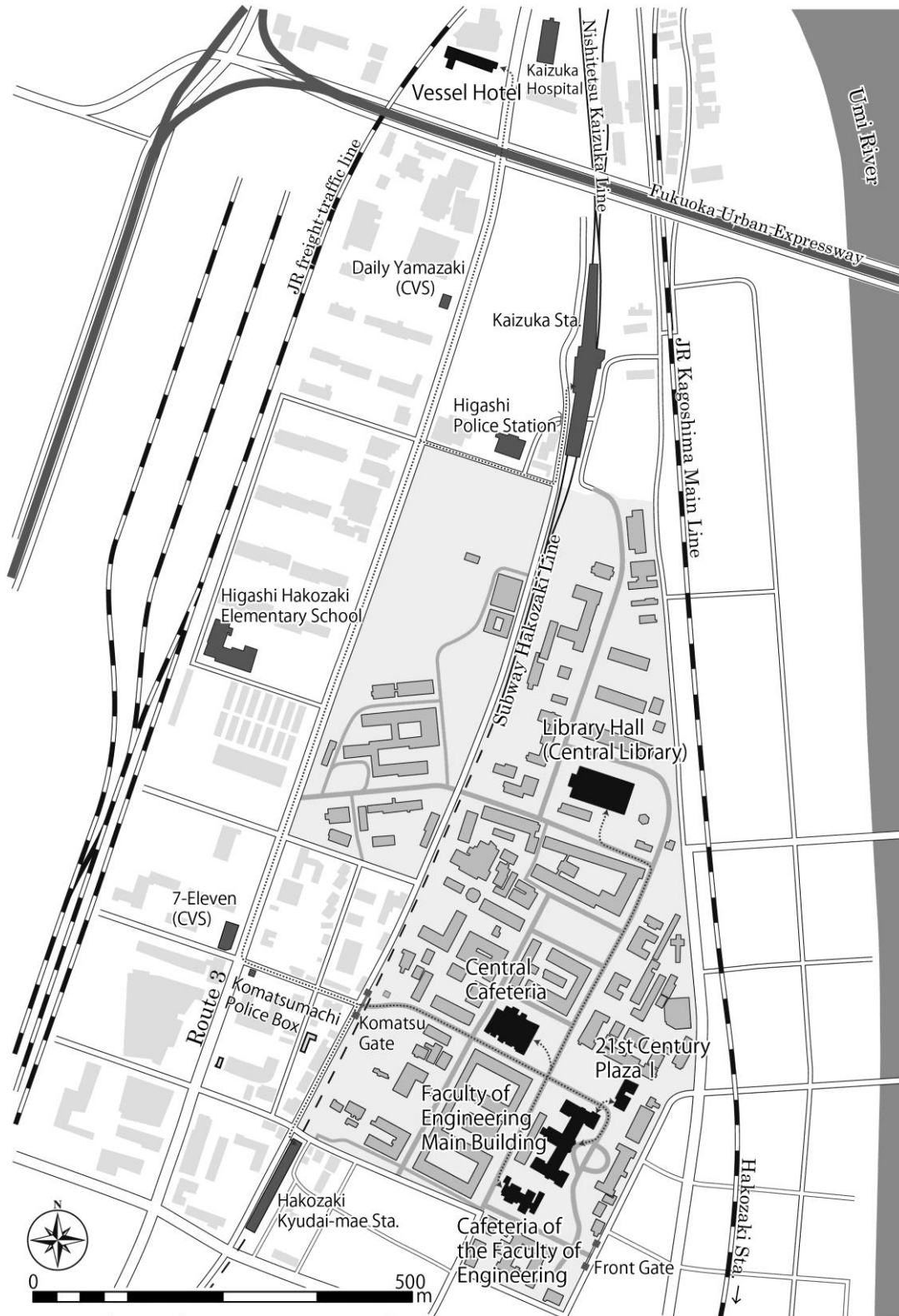


#### August 4

- 8:30 Kobe Rokko Island 神戸 六甲アイランド  
(move by bus)
- 10:00 Tsuruhashi area 鶴橋
- 11:30 Lunch Time ~ Free time (shopping)
- 13:00 (move by bus)
- 14:00 The Expo'70 Commemorative Park 万博記念公園  
Tower of the Sun 太陽の塔  
EXPO'70 Pavilion
- 15:30 National Museum of Ethnology 国立民族学博物館
- 17:00 (move by bus)
- 18:00 Hotel in Kyoto 京都

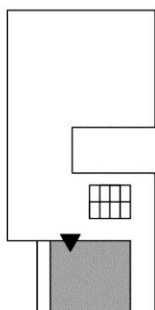
# ○ Map & Floor Guide

## Map

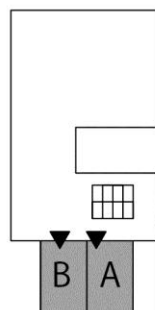


## Floor Guide

### 21st Century Plaza I

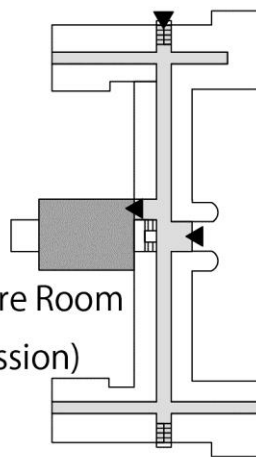


Multipurpose Hall  
(Registration,  
Poster Presentation)  
1 F



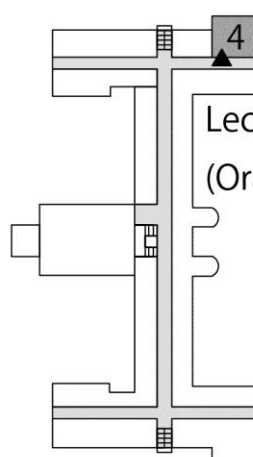
Lecture Room A, B  
(Oral Presentation)  
2 F

### Faculty of Engineering Main Building



Main Lecture Room  
(Plenary session)

1 F



Lecture Room 4  
(Oral Presentation)

2 F

◀ Entrance